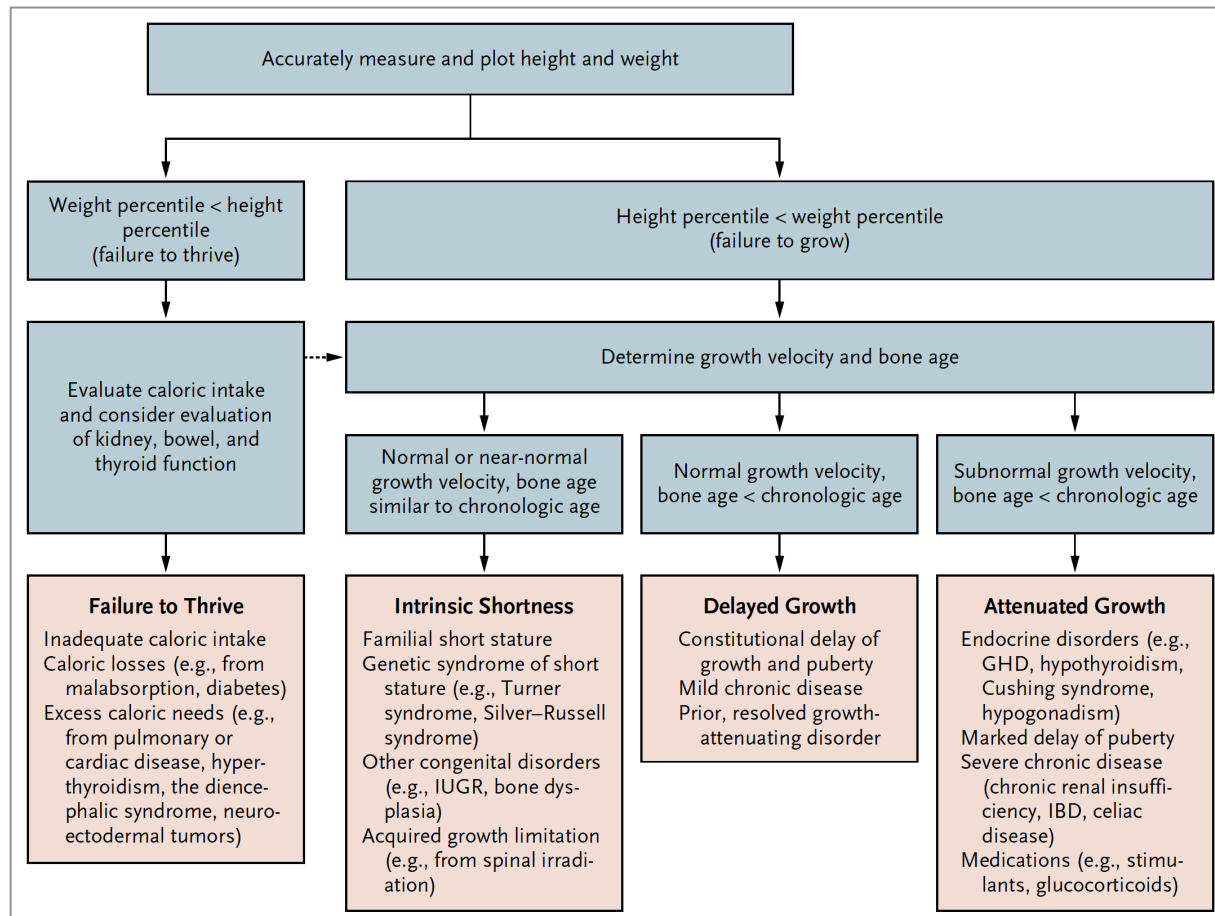


Conceptual Approach to the Evaluation and Differential Diagnosis of Slow Growth and Short Stature in Childhood.



Allen D.B., Cuttler L., N Engl J Med; 368:1220-1228 (2013)

Slow growth and short stature are defined as height below the 3rd percentile for age, growth rate less than the 10th percentile for bone age, predicted adult height that differs significantly from the midparental height, or abnormal body proportions. Percentiles are based on growth-curve percentiles. If the evaluation for failure to thrive is negative, the potential differential diagnosis for failure to grow should be reconsidered (dashed arrow). GHD denotes growth hormone deficiency, IBD inflammatory bowel disease, and IUGR intrauterine growth restriction. Data are from Nicol et al.⁷